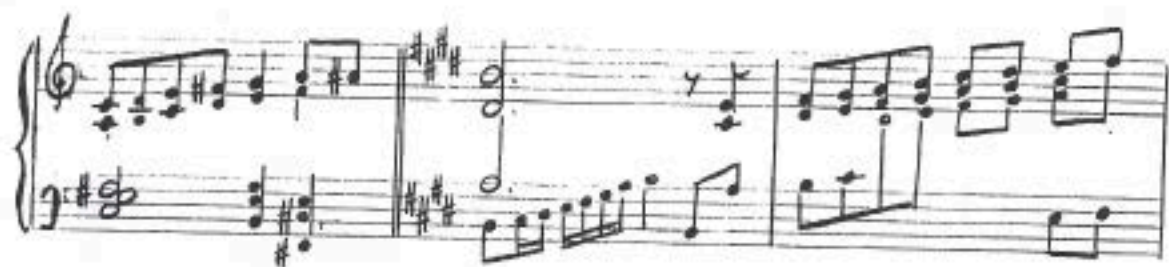


No. 7.

HERE'S HEALTH UNTO HIS MAJESTY.



TENOR **BARI**

TENOR
BARIT.

2

HERE'S A HEALTH UN-TO HIS MA-JES-TY WITH A PA LA LA LA LA

BASS

PIANO

LA LA WITH A PA LA LA LA LA

CON-FU-SION TO HIS EN-E-MIES.

TENOR **BARI**

LA LA AND HE THAT WILL NOT DRINK HIS HEALTH I WITH HIM NEITHER

WITH A FA LA LA ...

WIT NOR WEALTH

NOR YET A ROPE TO HANG HIM-SELF

WITH A

LA LA LA ...

FINE

FA- LA- LA ...

FINE

DEL \$

AL FINE.

HOLLOW CROWN, II.

This is a handwritten musical score for a piece titled "Hollow Crown, II.". The score is written on ten staves. The first three staves contain vocal lines with lyrics: "WIT NOR WEALTH", "NOR YET A ROPE TO HANG HIM-SELF", and "WITH A". The fourth and fifth staves are piano accompaniment. The sixth and seventh staves continue the vocal line with "FA- LA- LA ..." and end with a "FINE" marking. The eighth and ninth staves are piano accompaniment. The tenth staff is a final piano accompaniment section with triplets and ends with a "DEL \$" and "AL FINE." marking. The key signature is one sharp (F#) and the time signature is common time (C).